

# Comprehensive Genome and Transcriptome Structural Analysis of a Breast Cancer Cell Line using PacBio Long Read Sequencing

Maria Nattestad

Schatz + McCombie + Hicks at Cold Spring Harbor Laboratory

McPherson + Beck at the Ontario Institute for Cancer Research

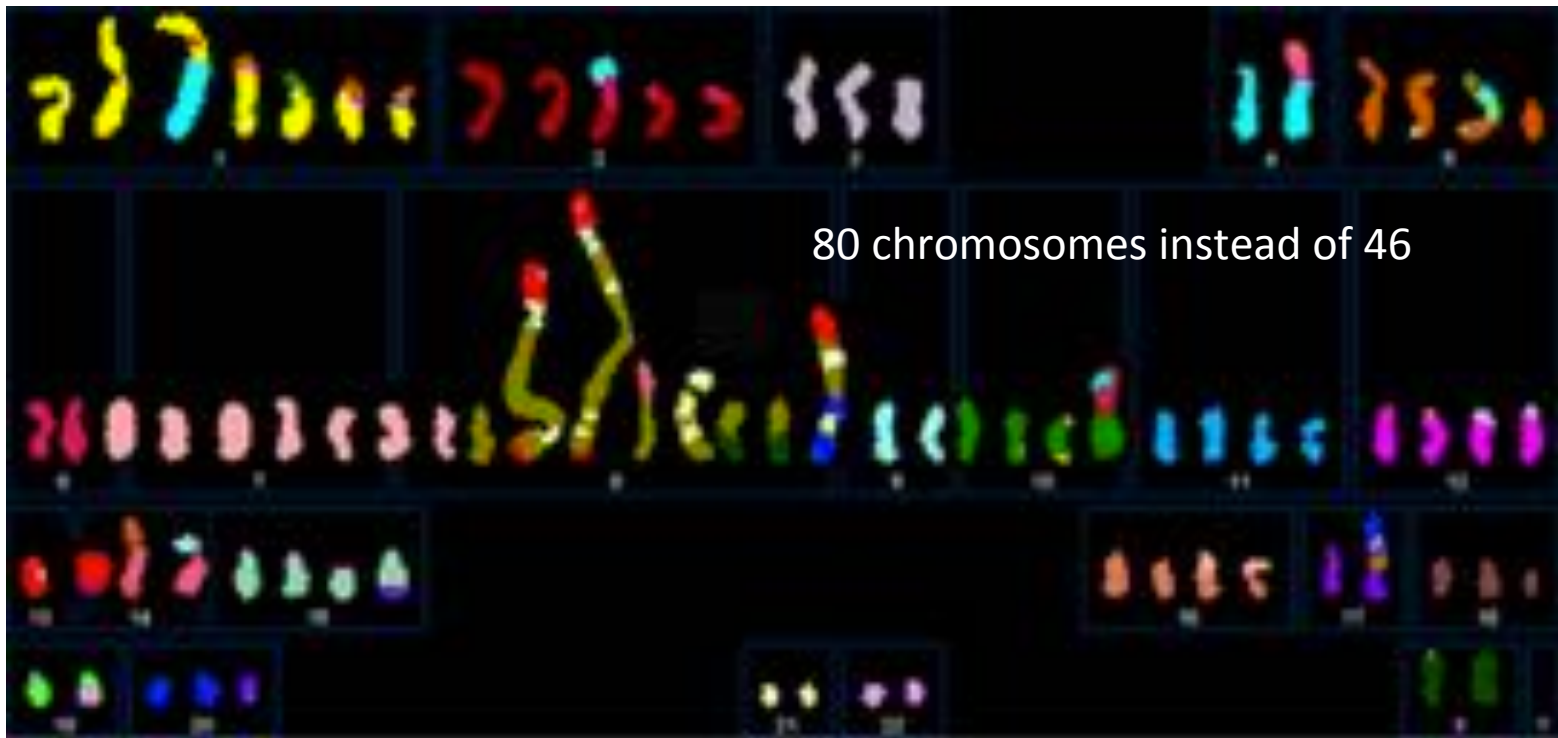
Pacific Biosciences

DNAexus



# SK-BR-3

Most commonly used Her2-amplified breast cancer cell line



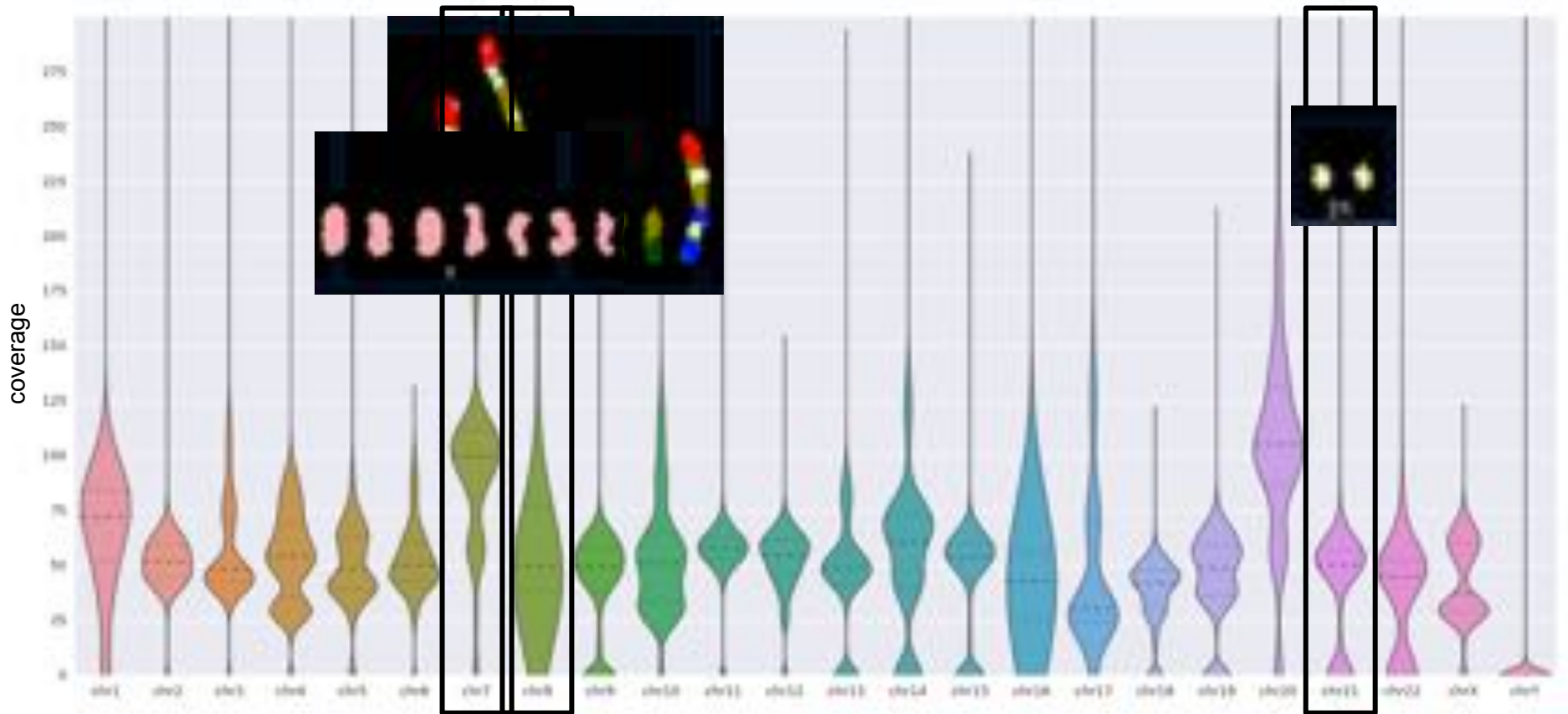
Often used for pre-clinical research on Her2-targeting therapeutics such as Herceptin (Trastuzumab) and resistance to these therapies.

(Davidson et al, 2000)

# PacBio long-read DNA sequencing

mean read length: 9 kb  
max read length: 71 kb

72X coverage

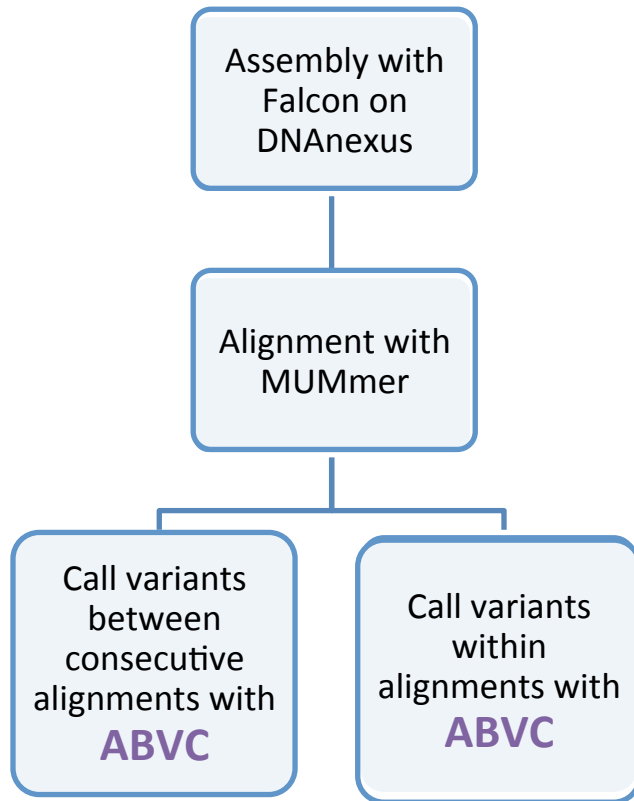


Genome-wide coverage averages around 54X

Coverage per chromosome varies greatly as expected from previous karyotyping results

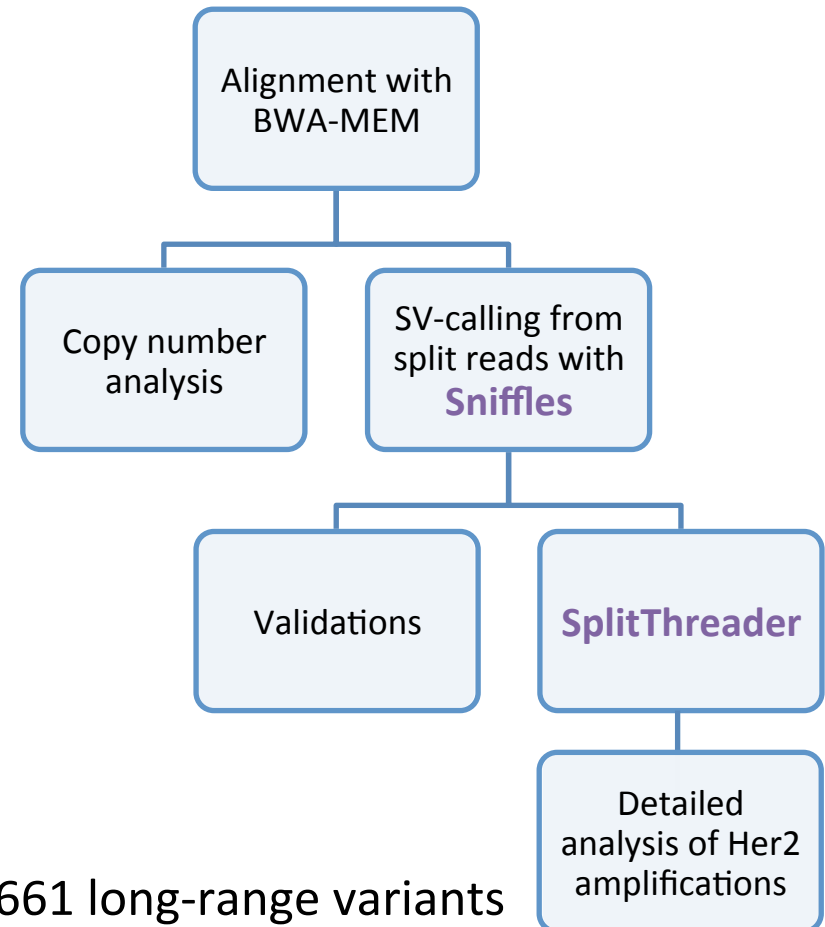
# Genome structural analysis

## Assembly-based



~ 11,000 local variants  
50 bp < size < 10 kbp

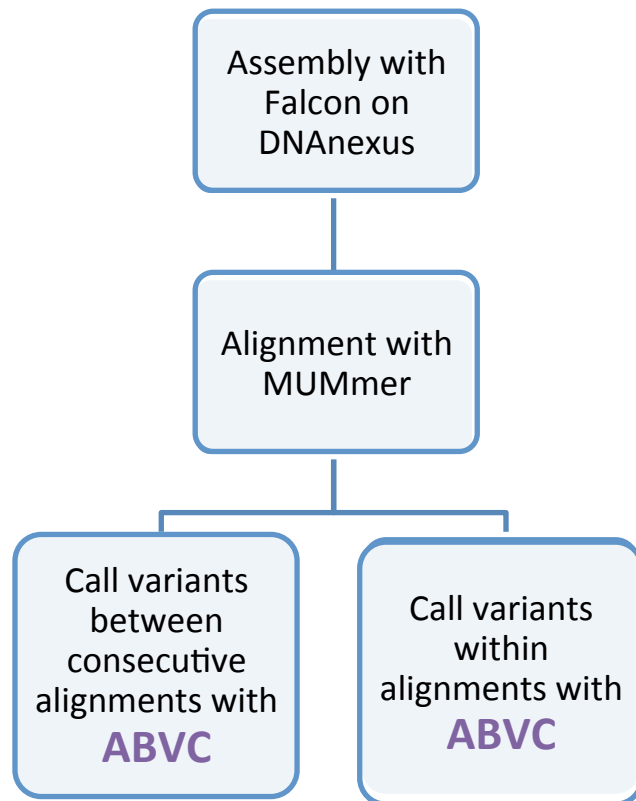
## Alignment-based



661 long-range variants  
(>10kb distance)

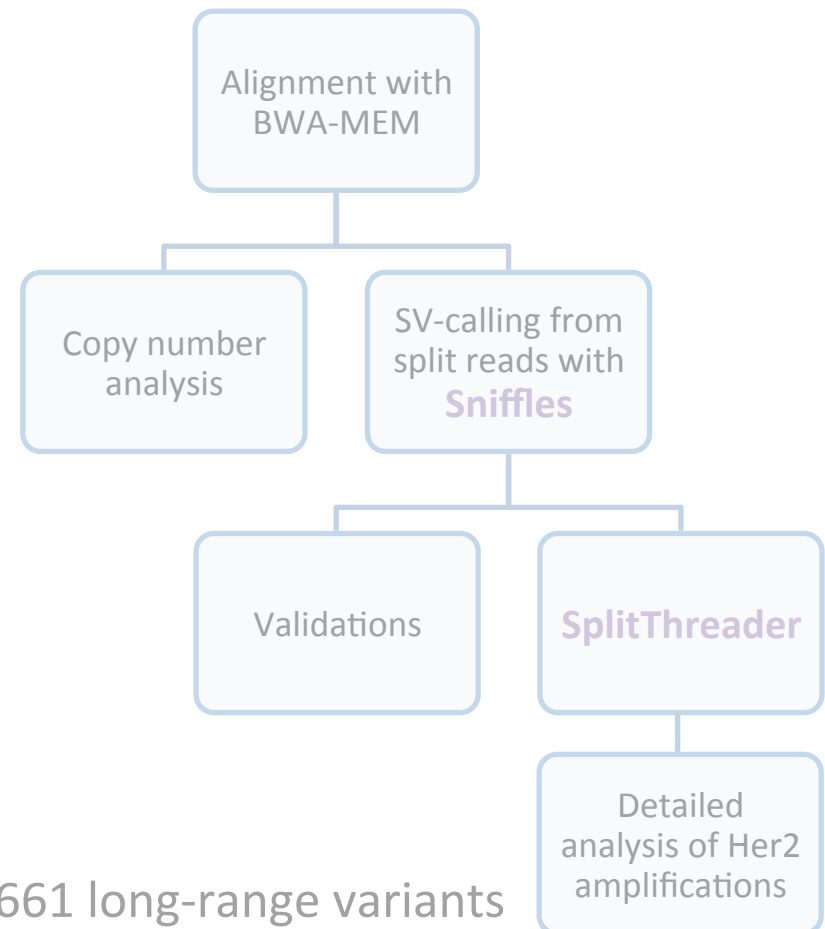
# Genome structural analysis

## Assembly-based



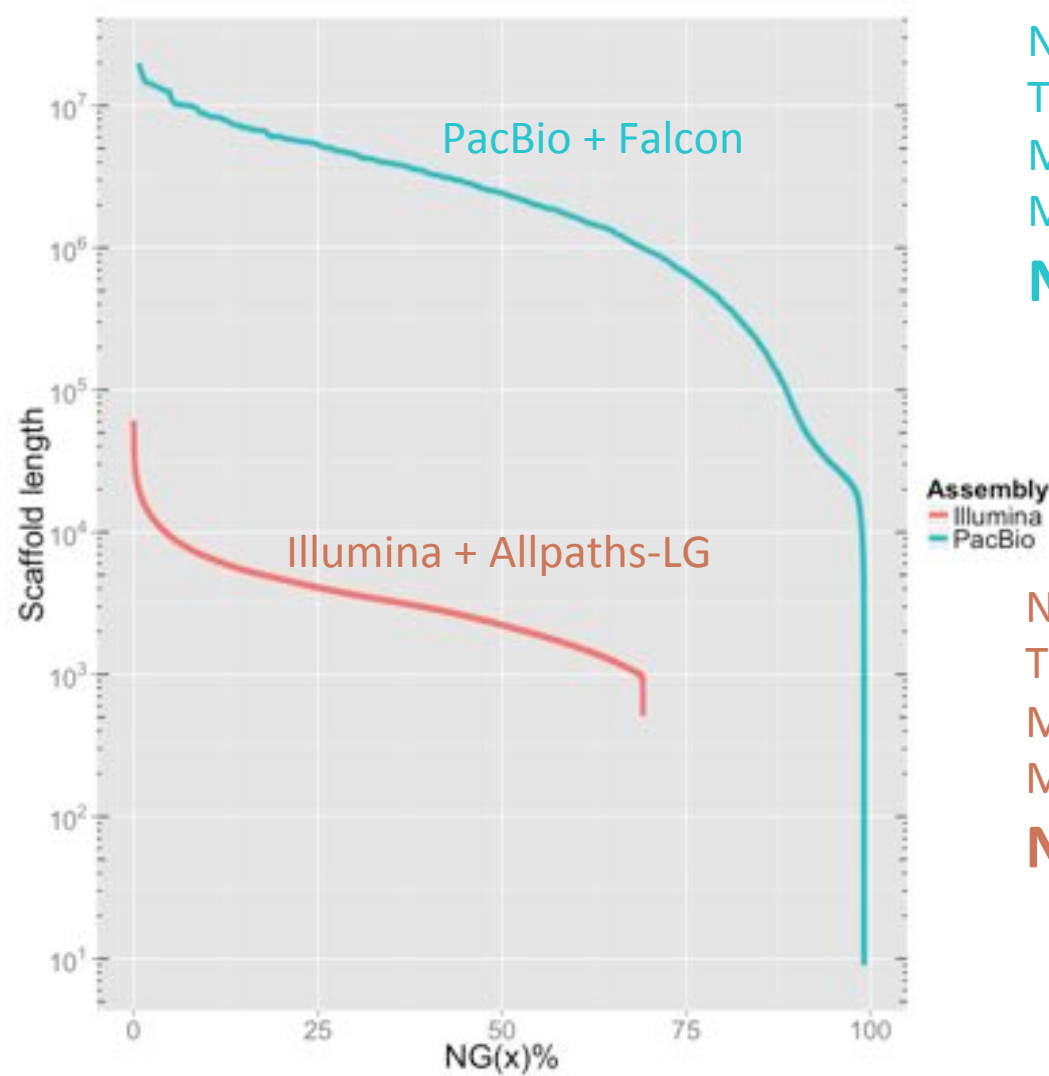
~ 11,000 local variants  
50 bp < size < 10 kbp

## Alignment-based



661 long-range variants  
(>10kb distance)

# Assembly using PacBio yields far better contiguity

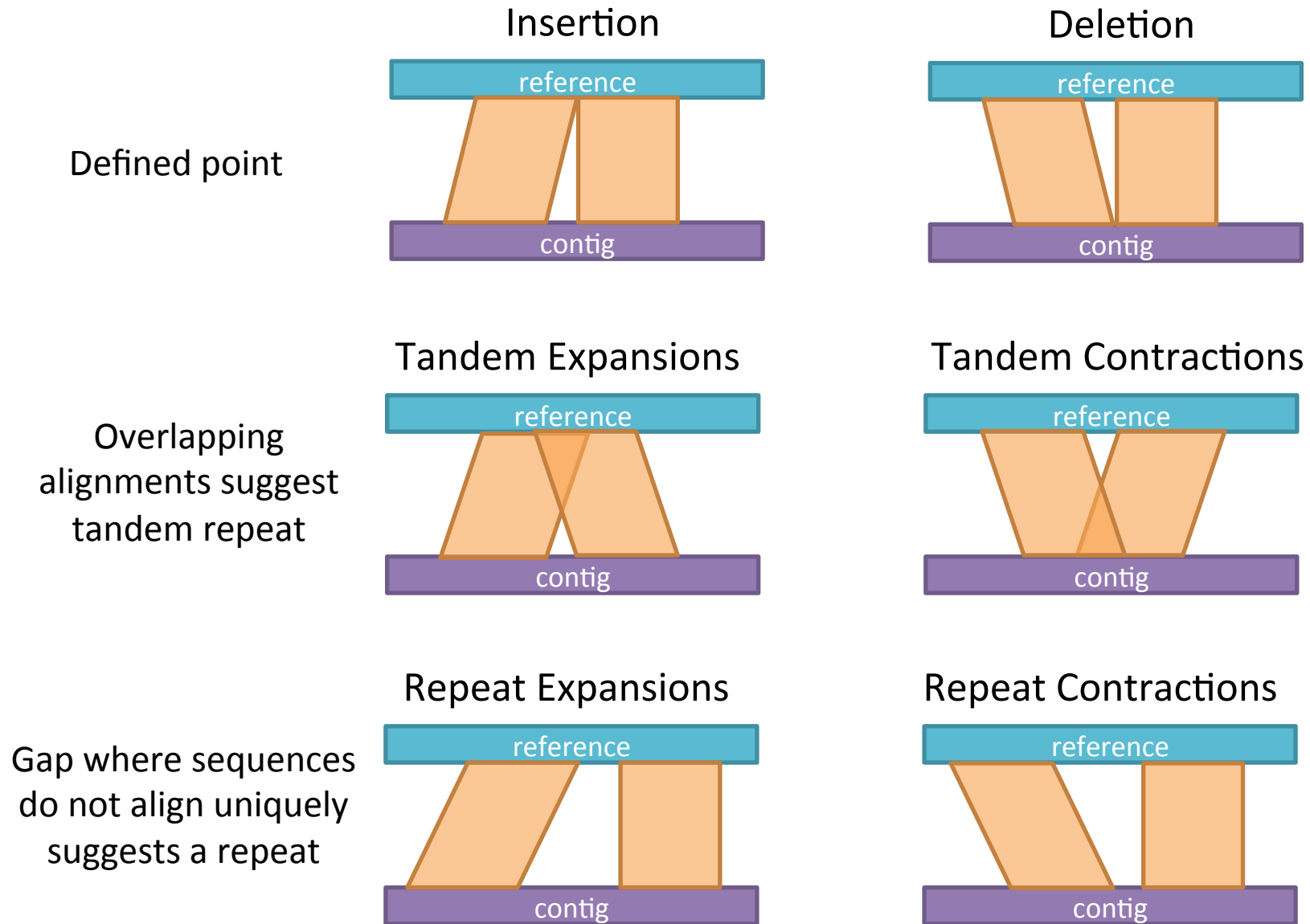


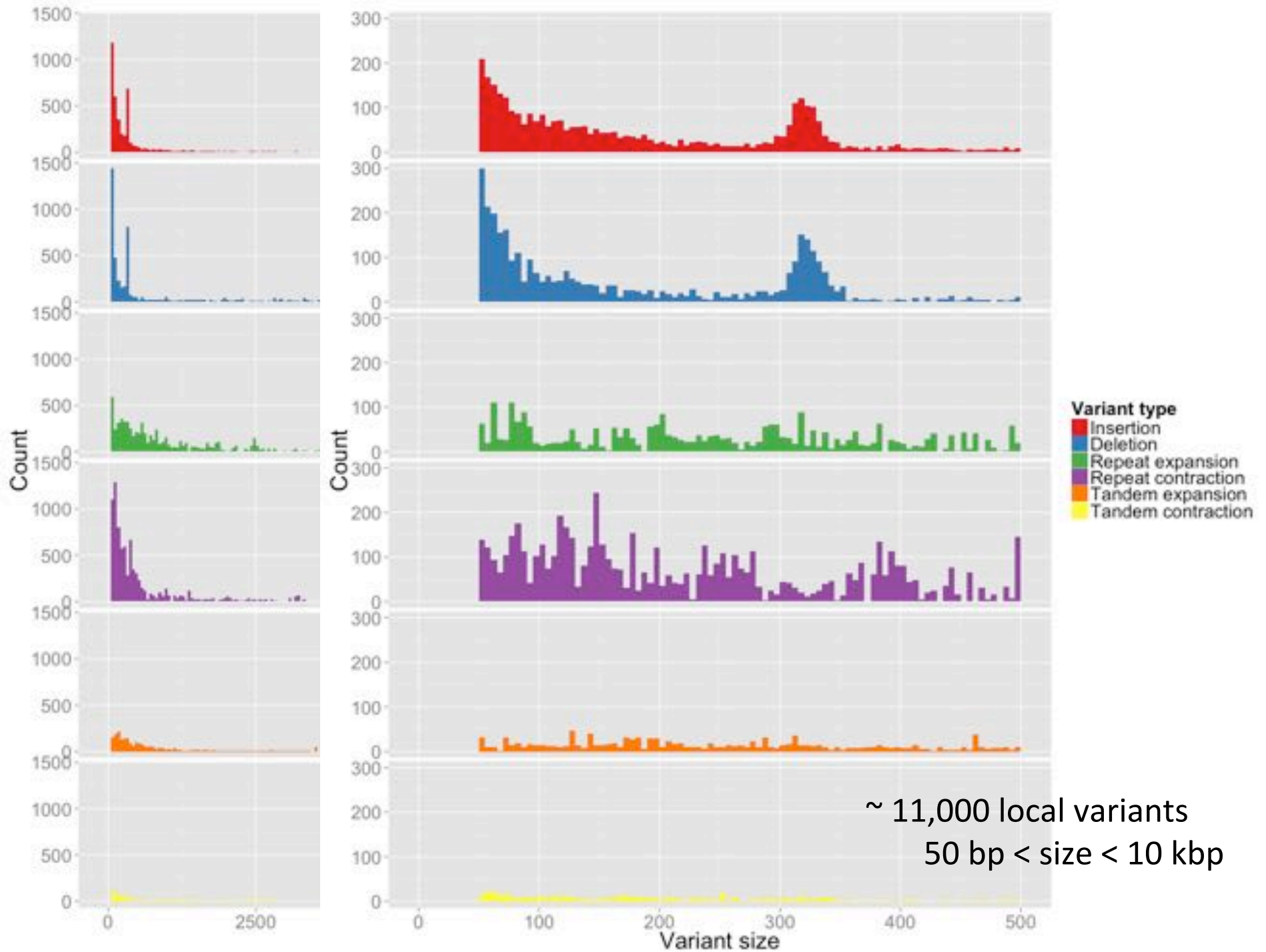
Number of sequences: 13,532  
Total sequence length: 2.97Gb  
Mean: 266 kb  
Max: 19.9 Mb  
**N50: 2.46 Mb**

Relative to a genome size of 3 Gb

Number of sequences: 748,955  
Total sequence length: 2.07 Gb  
Mean: 2.8 kb  
Max: 61 kb  
**N50: 3.3 kb**

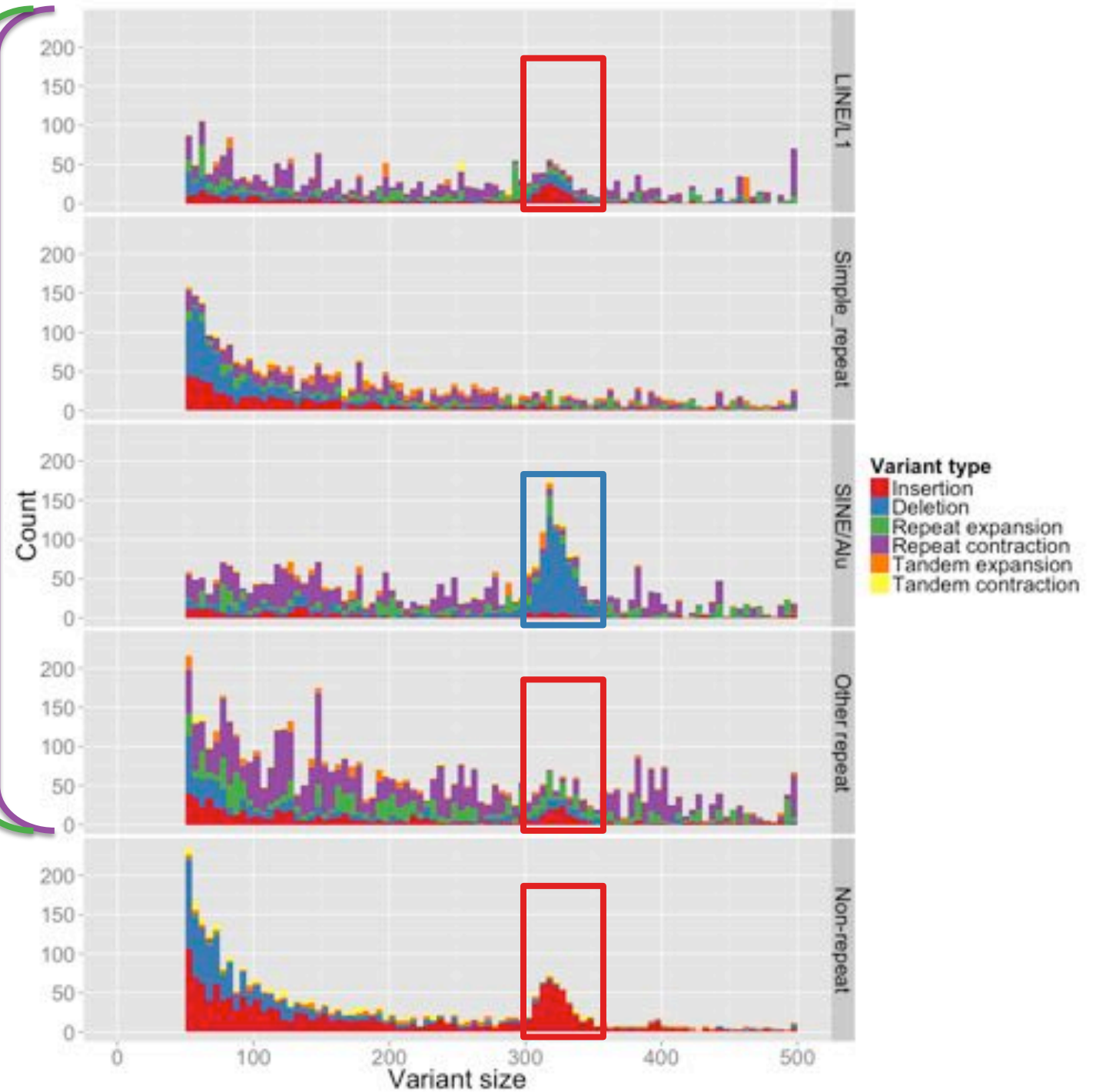
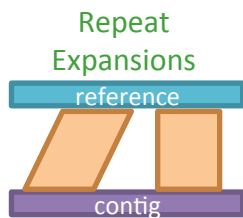
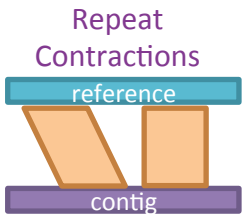
# ABVC: Assembly-Based Variant-Caller





~ 11,000 local variants  
 50 bp < size < 10 kbp

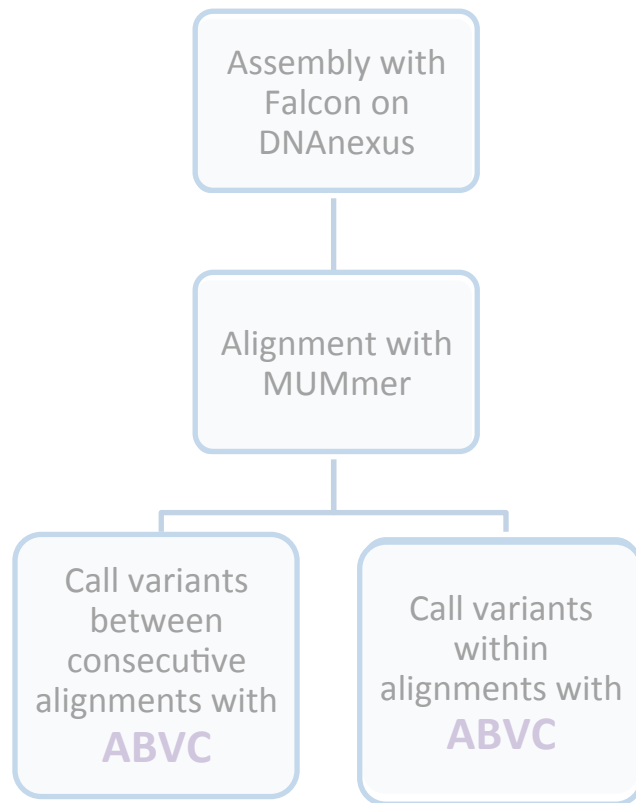




BLASTed 515 insertions:  
427 (83%) of them matched Alu elements

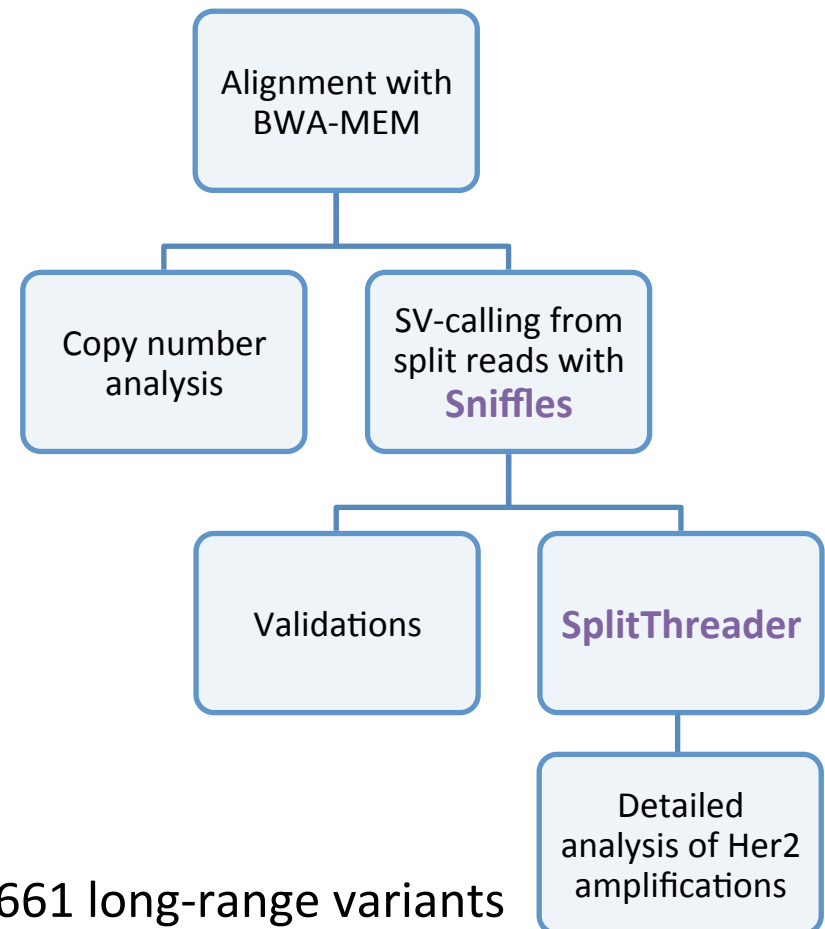
# Genome structural analysis

## Assembly-based



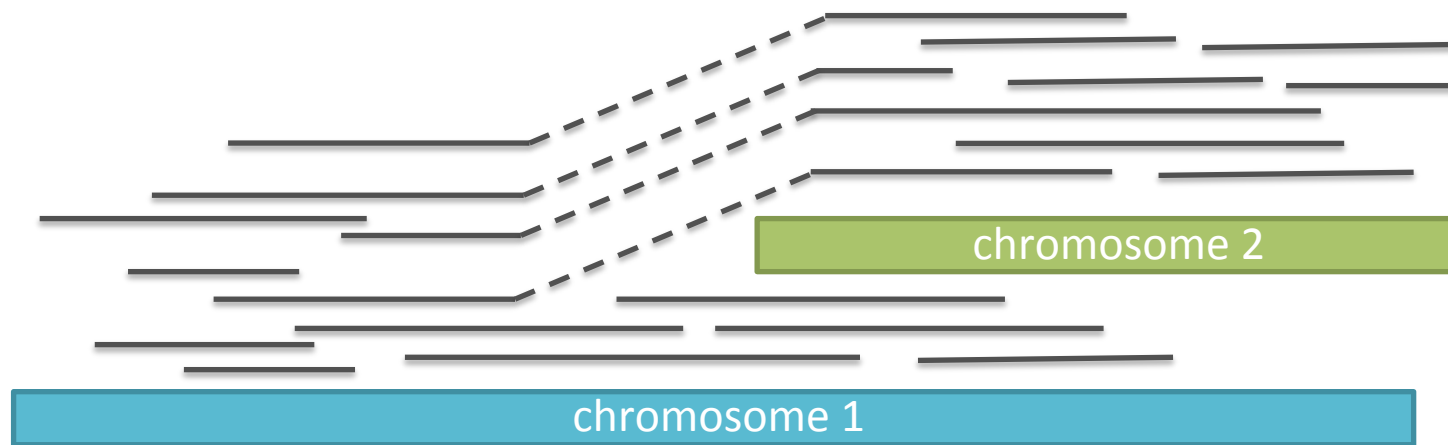
~ 11,000 local variants  
50 bp < size < 10 kbp

## Alignment-based



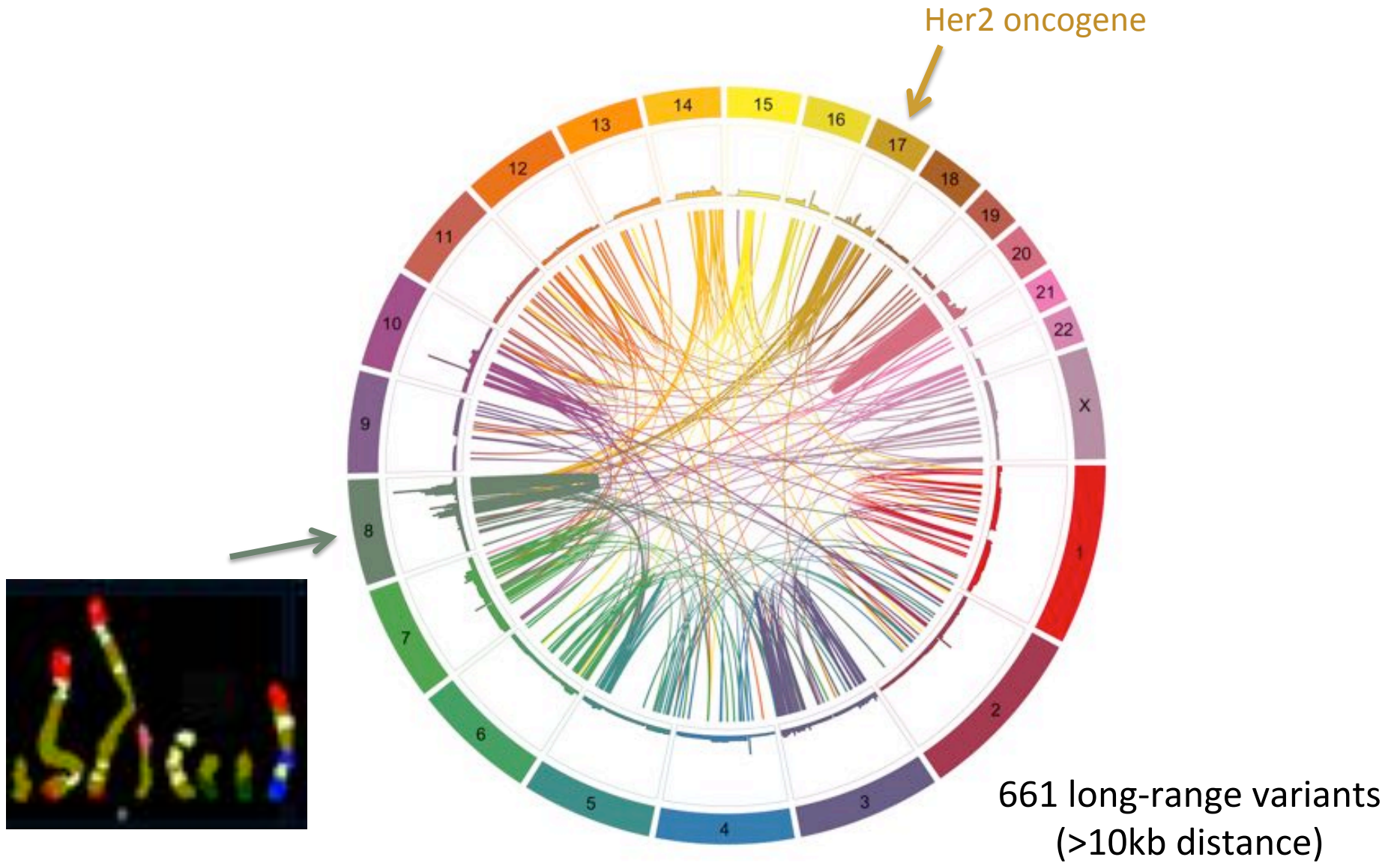
661 long-range variants  
(>10kb distance)

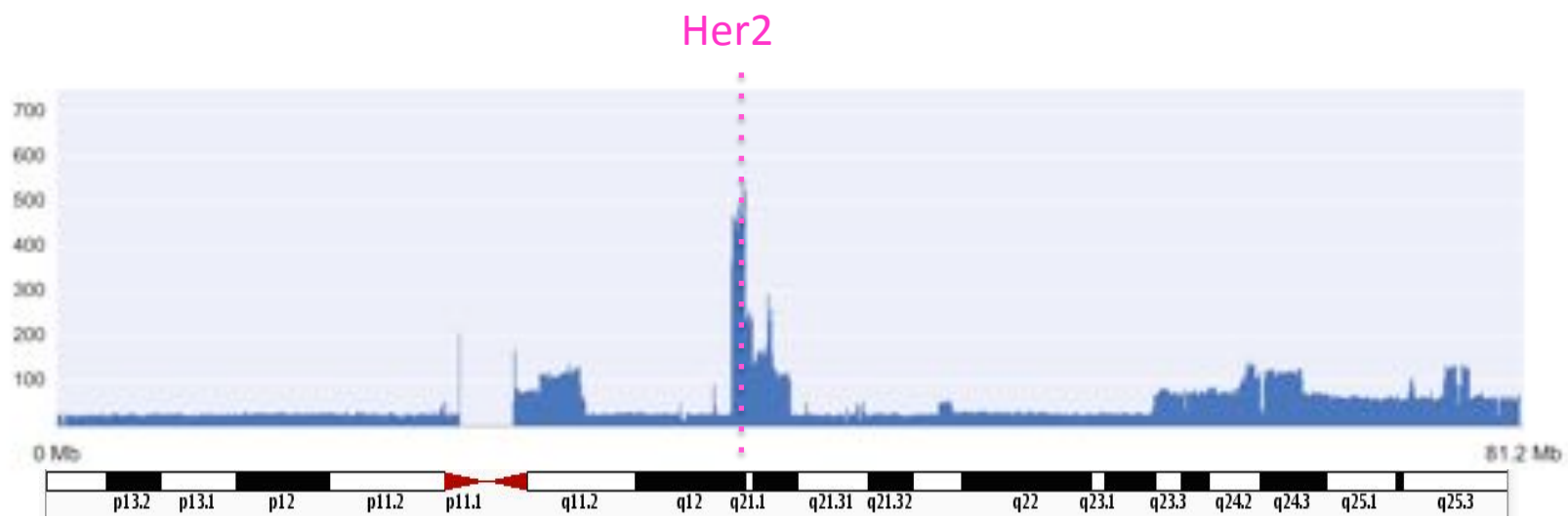
# Split-read variant calling with Sniffles to capture the long-range variants



See Fritz at Poster 183

# Long-range structural variants found by Sniffles



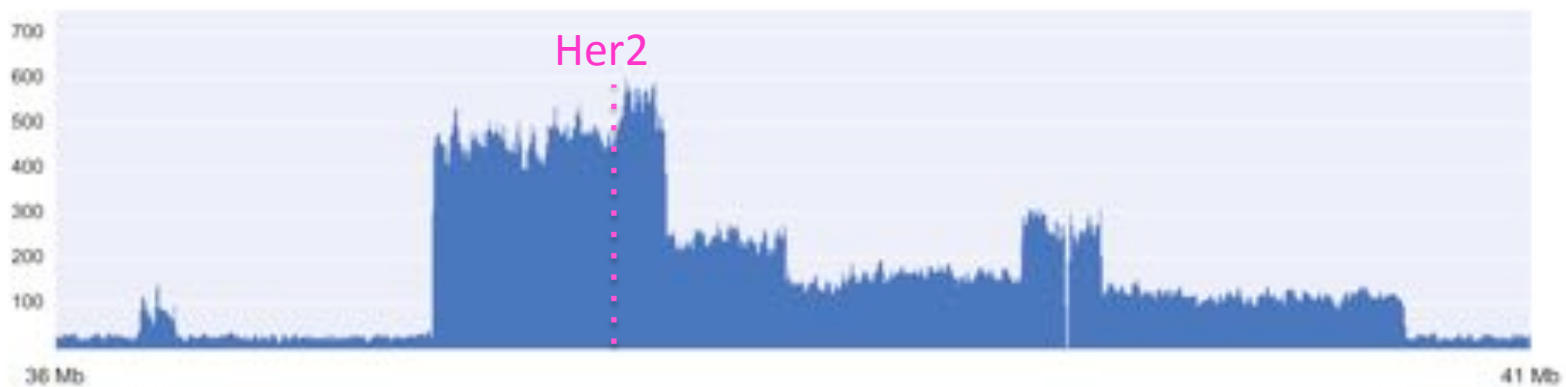
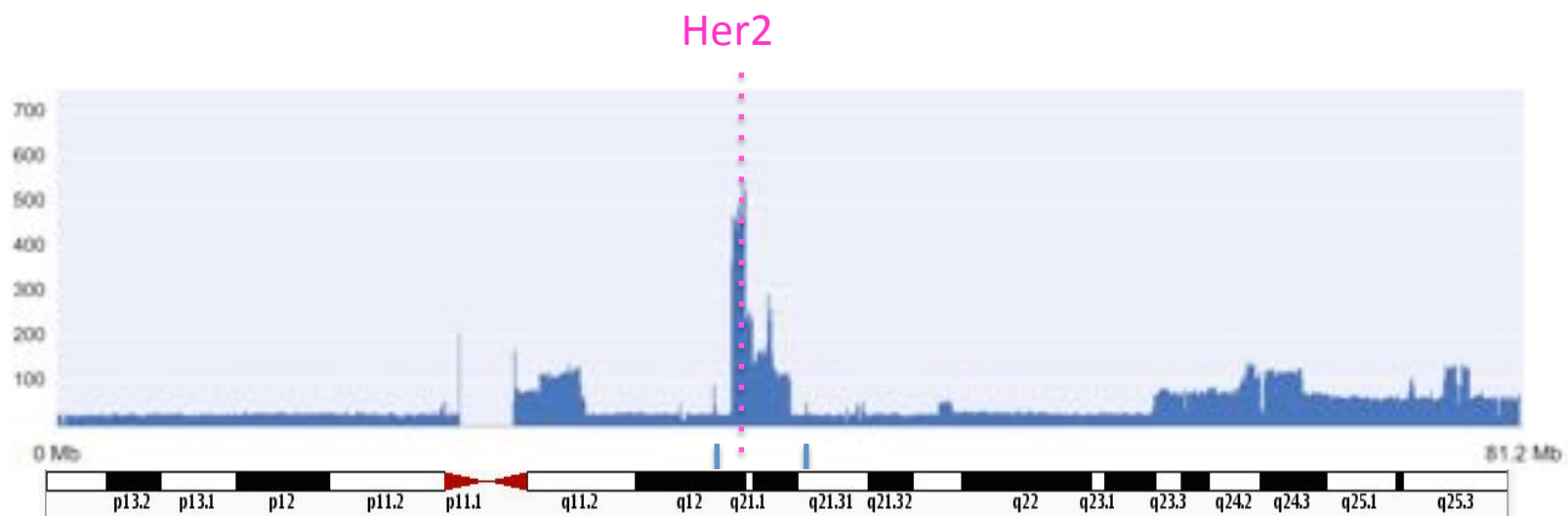


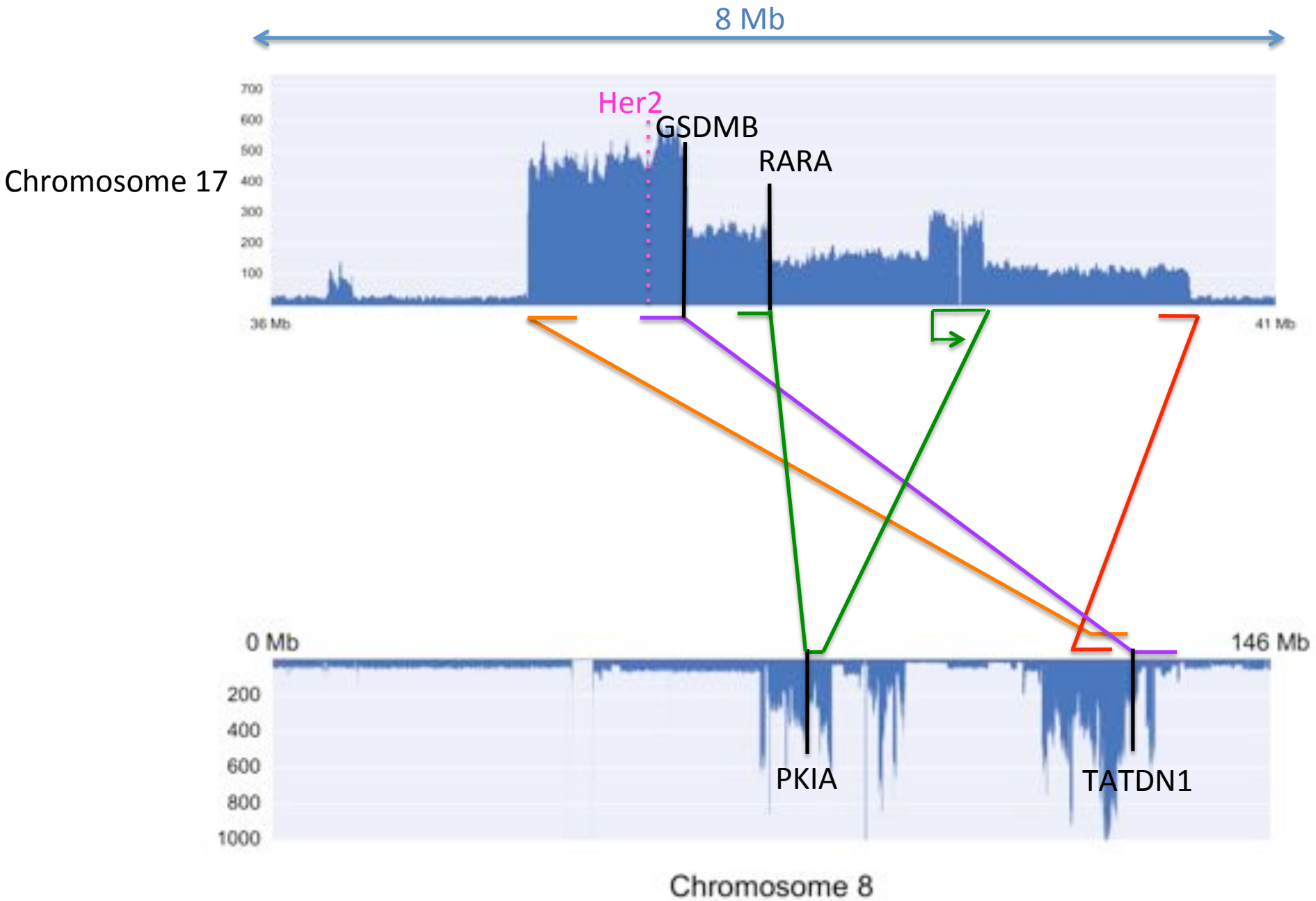
Chr 17: 83 Mb



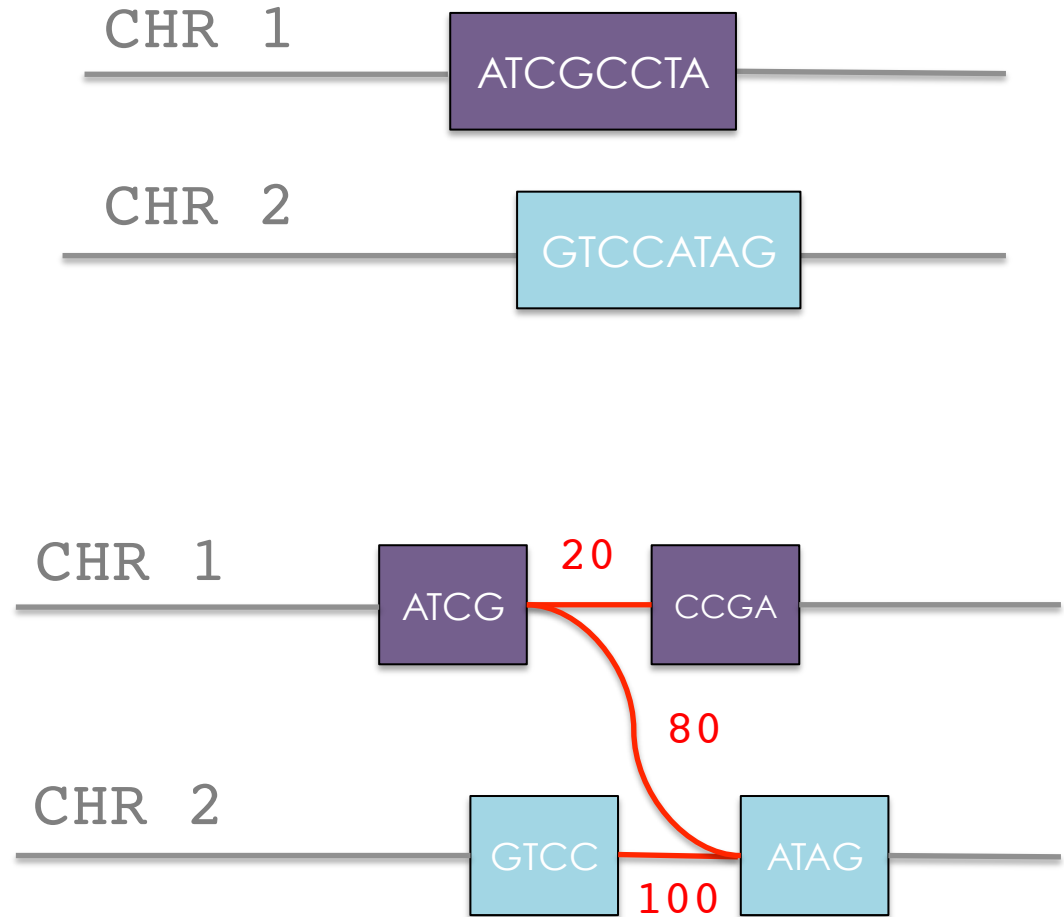
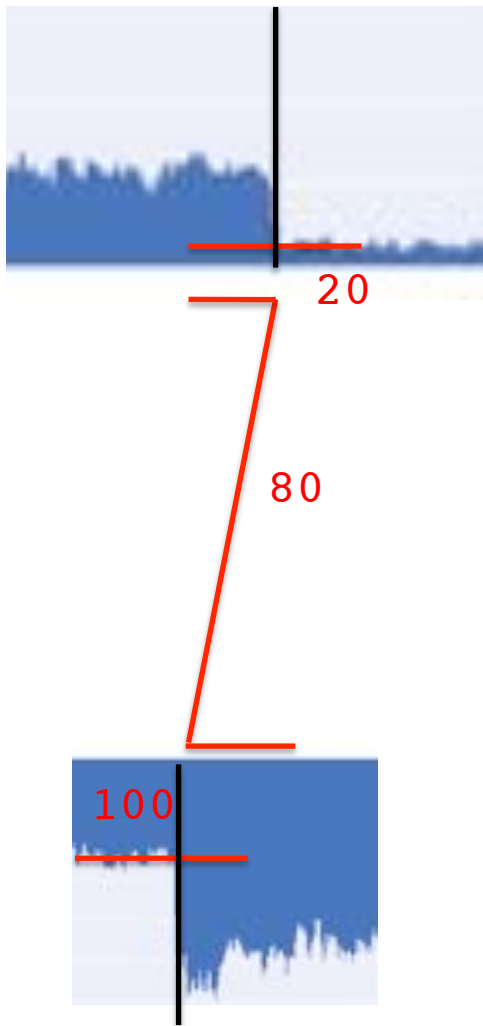
8 Mb



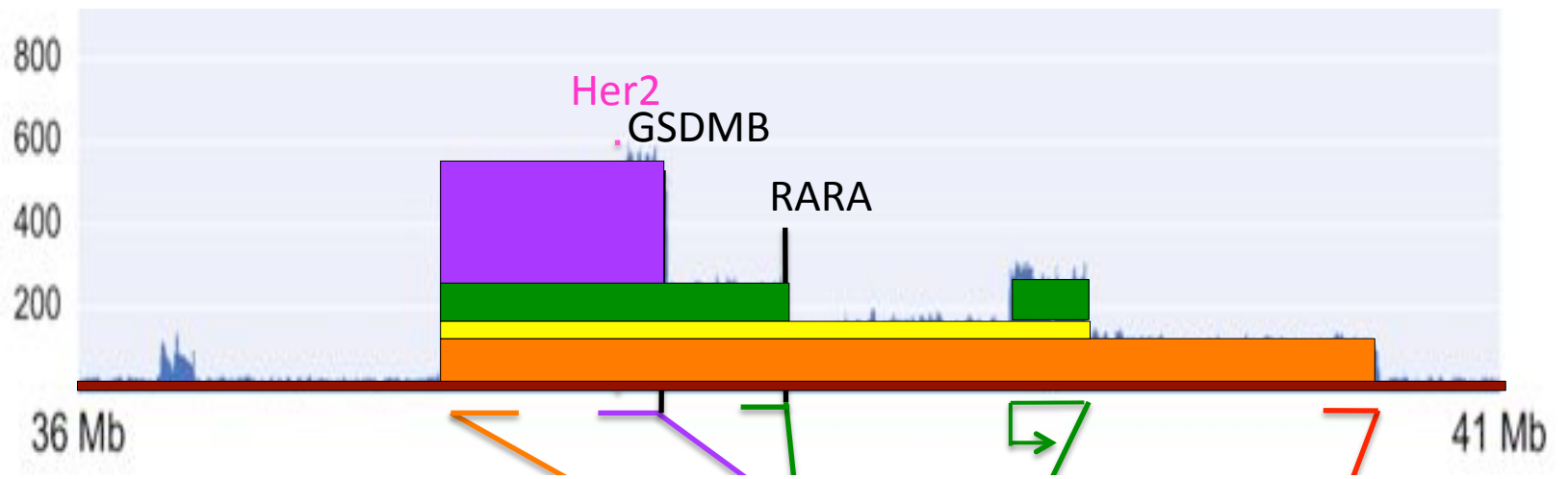




# SplitThreader: Graphical threading to retrace complex history of rearrangements in cancer genomes

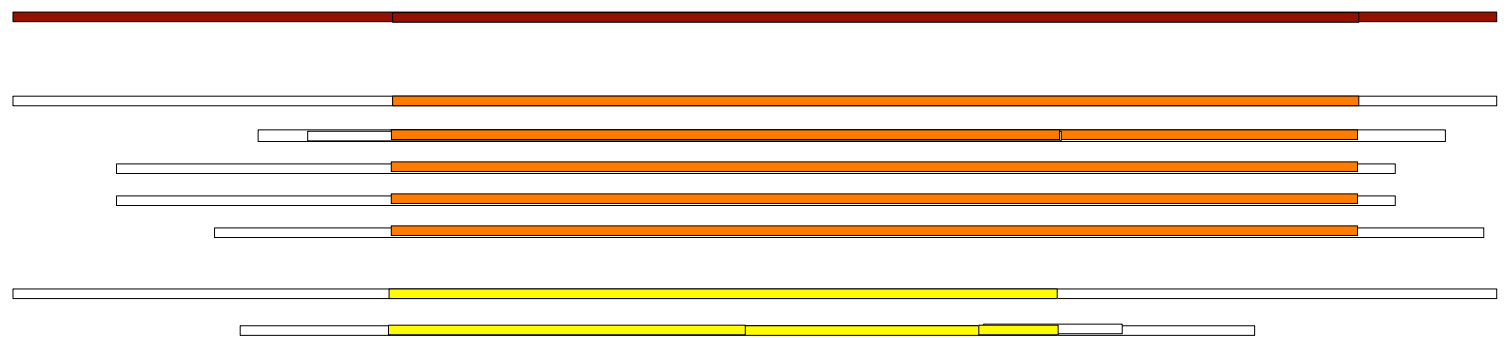




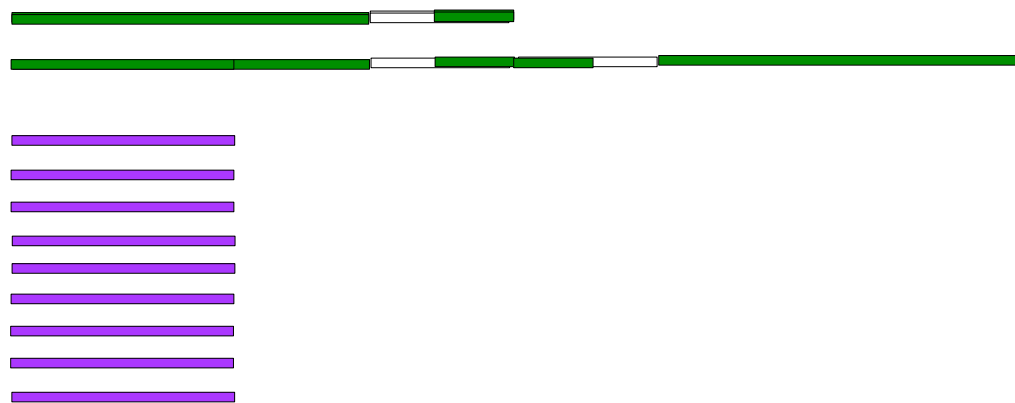


Chr 17

Chr 8



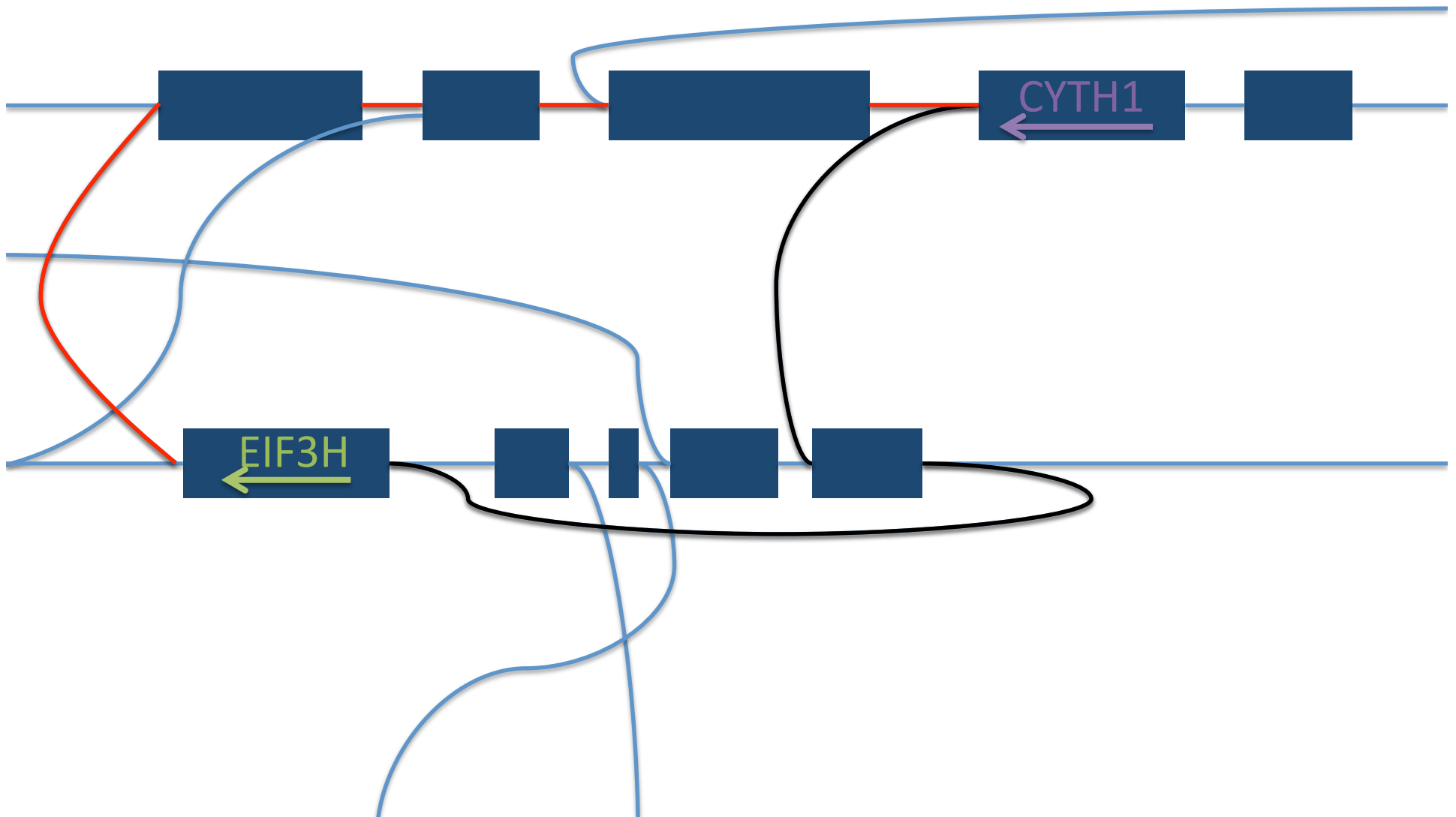
1. Healthy chromosome 17
2. Translocation into chromosome 8
3. Translocation within chromosome 8
4. Complex variant and inverted duplication within chromosome 8
5. Translocation within chromosome 8



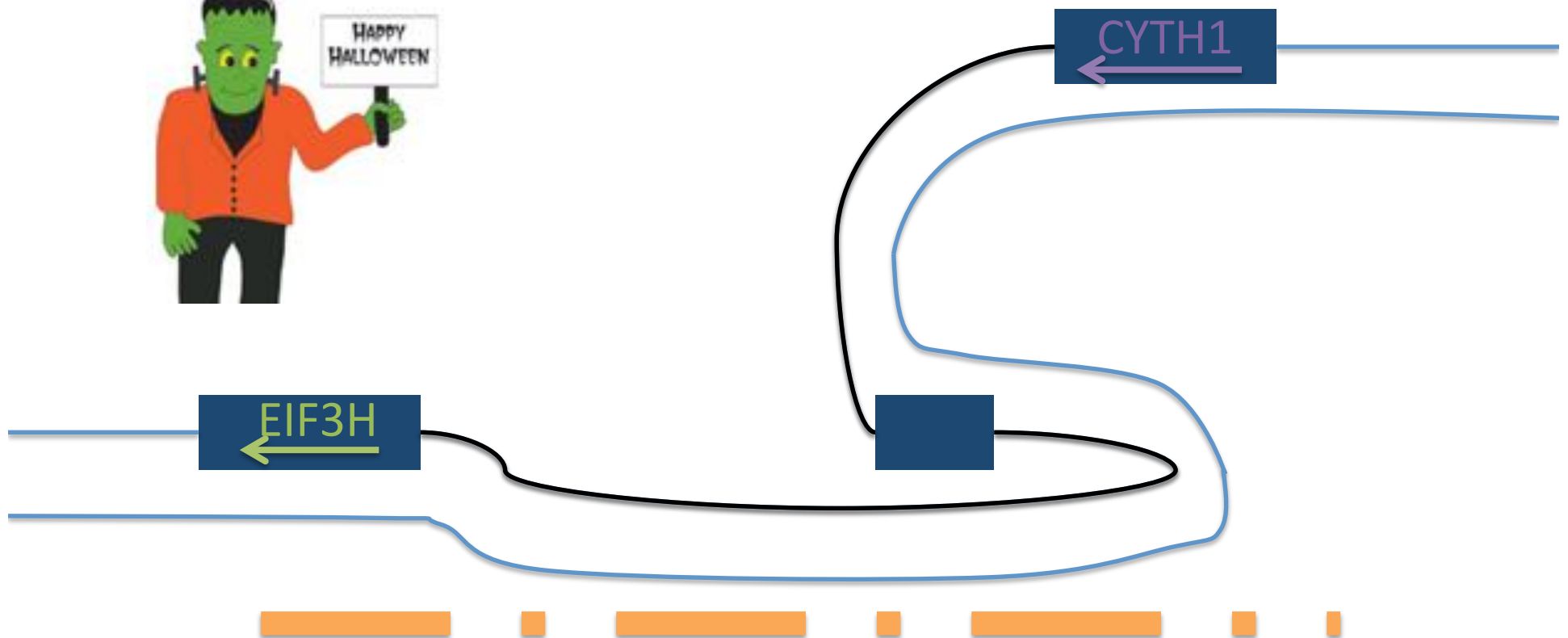
# Transcriptome analysis with IsoSeq: Long-read RNA sequencing

- Full-length transcripts
- Found 17 gene fusions with both DNA and RNA evidence
  - 13 seen in previous RNA-seq literature
  - 4 novel fusions
- 2 previously observed fusions had RNA evidence but no direct link in the DNA
  - Confirmed using SplitThreader

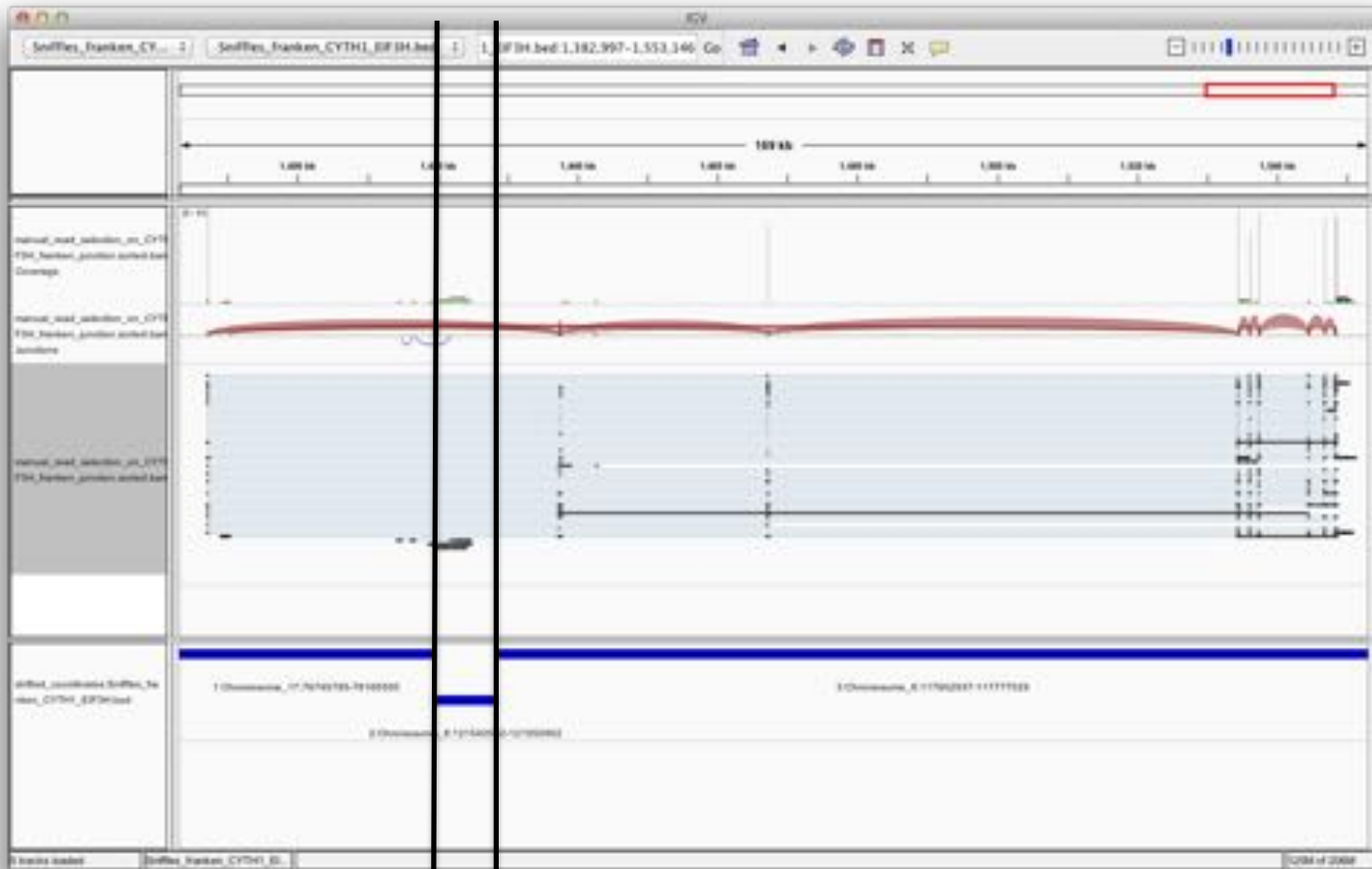
# CYTH1-EIF3H gene fusion in the SplitThreader graph



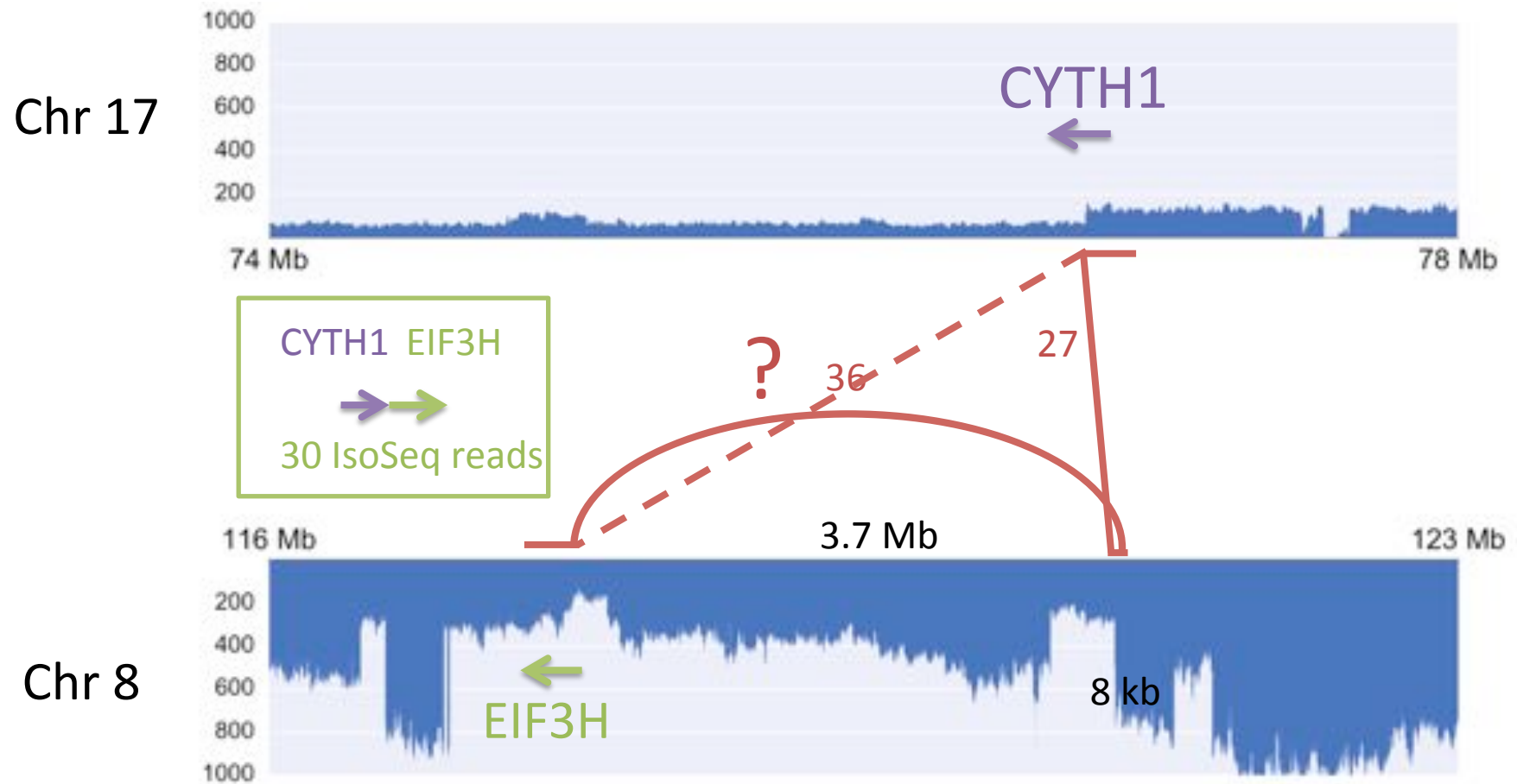
# CYTH1-EIF3H gene fusion in the SplitThreader graph



# Frankensteining the CYTH1-EIF3H gene fusion



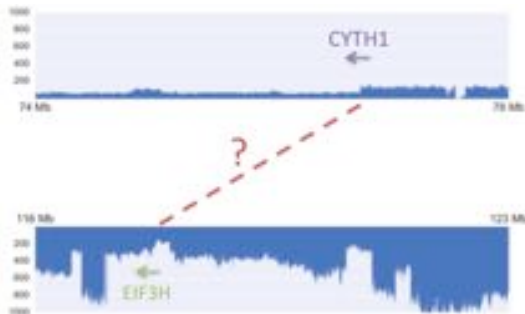
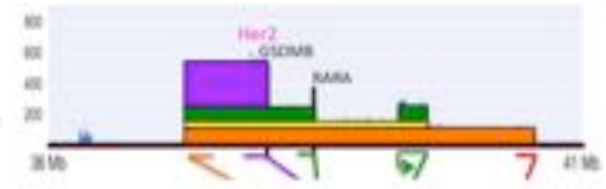
# CYTH1-EIF3H gene fusion



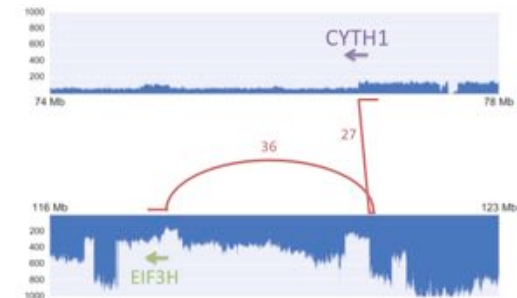
# The genome informs the transcriptome



Explain amplifications



Trace gene fusions



More genomes coming soon!

Data and additional results: <http://schatzlab.cshl.edu/data/skbr3/>

# Acknowledgments



Cold  
Spring  
Harbor  
Laboratory

Sara Goodwin  
Timour Baslan  
Fritz Sedlazeck  
Tyler Garvin  
Han Fang  
James Gurtowski  
Philipp Rescheneder  
Elizabeth Hutton  
Marley Alford  
Melissa Kramer  
Eric Antoniou  
James Hicks  
Michael Schatz  
W. Richard McCombie



Karen Ng  
Timothy Beck  
Yogi Sundaravadanam  
John McPherson



Elizabeth Tseng  
Jason Chin

